



8th ANNUAL

EGG INDUSTRY
ISSUES FORUM

OFFICIAL
SCHEDULE

*Chat on Twitter using
#EggForum2016*

A Vision for the Roundtable for Sustainable Eggs

Carlos M. Saviani

VP Food Sustainability at WWF

VP Global Roundtable for Sustainable Beef



EGG FARMERS REDUCE ENVIRONMENTAL IMPACT

Today's hens are producing more eggs and living longer due to better health, nutrition and living environments; yet at the same time egg farms use fewer resources and produce less waste.

U.S. population increase
over the last 50 years



Egg production efficiencies

developed over 50 years enable farmers to increase productivity



All while **reducing environmental impact**

26% less daily feed

32% less water

71% fewer greenhouse gas emissions


IMPROVING FEED

Today's hens use a little over **half the amount of feed** to produce a dozen eggs

 **78** million more hens

Using 1960 technology to produce today's supply of **77.8 billion eggs** would have required

 **1.3** million more acres of corn

 **1.8** million more acres of soybeans

SAVING WATER

Compared to 1960, today's hens use **32% less water** to produce a dozen eggs

The volume of water conserved would fill

3,716 Olympic-sized swimming pools



REDUCING EMISSIONS

2010 egg production has **71% lower greenhouse gas emissions** than in 1960

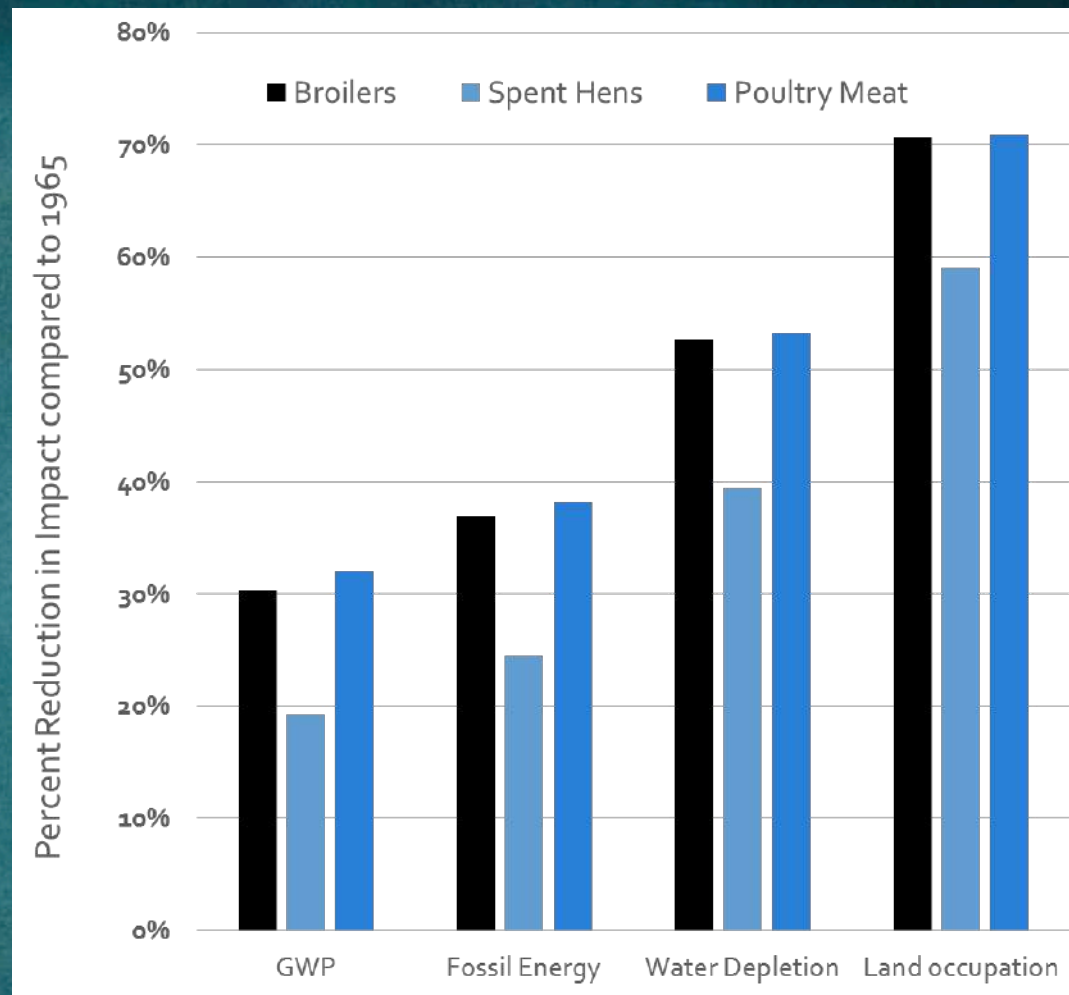
The amount of CO₂ reduced is equivalent to taking

5.2 million cars off the road for a year





A Retrospective Analysis of US Poultry Production



Poultry efficiency



Broilers – improvement evolution

	1925	1945	1965	1985	2005	2045*
Conversion – kg feed/kg live	4.7	4.0	2.4	2.0	1.7	1.6
Mortality %	18%	10%	6%	5%	4%	3%
Age (days)	112	84	63	49	42	40
Live commercial weight - kg	1.0	1.4	1.6	1.9	2.4	3.2

*projected

NATIONAL

PORK

PRODUCERS
COUNCIL



Water use
reduced
41%
per lb.
carcass wt.



Land use
reduced
78%
per 1,000 lbs.
carcass wt.

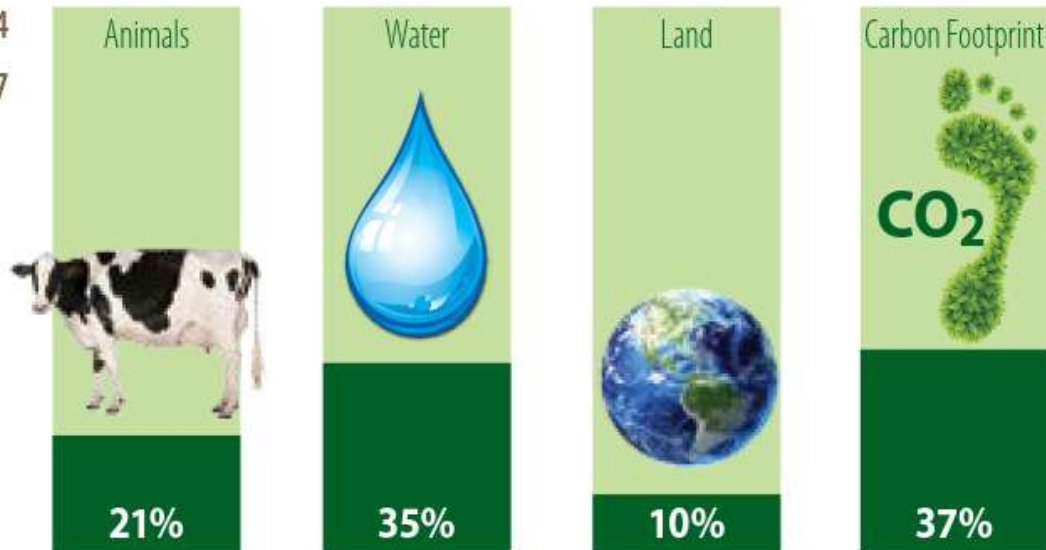


Carbon
footprint
reduced
35%
per lb.
carcass wt.

Producing 1 billion kg of milk: 1944 vs. 2007

■ Requirements in 1944

■ Requirements in 2007



Source: Capper et al., 2009, *Journal of Animal Science*



2014 SUSTAINABILITY COUNCIL MEMBER REPRESENTATION



14%
CROP PRODUCTION
& SUPPLIERS



33%
DAIRY FARMERS
& COOPERATIVES



23%
PROCESSORS &
MANUFACTURERS



6%
RETAIL & QUICK-SERVE
RESTAURANTS



24%
ASSOCIATIONS, GOV'T
& COMMUNITY



Future opportunities to further increase sustainability:



Committed to a journey of continuous improvement



Source: Beef Industry Sustainability Lifecycle Assessment, funded by the beef checkoff



GLOBAL ROUNDTABLE FOR
SUSTAINABLE BEEF



GTPS
Grupo de Trabalho da
Pecuária Sustentável



CRSB
CANADIAN ROUNDTABLE
FOR SUSTAINABLE BEEF

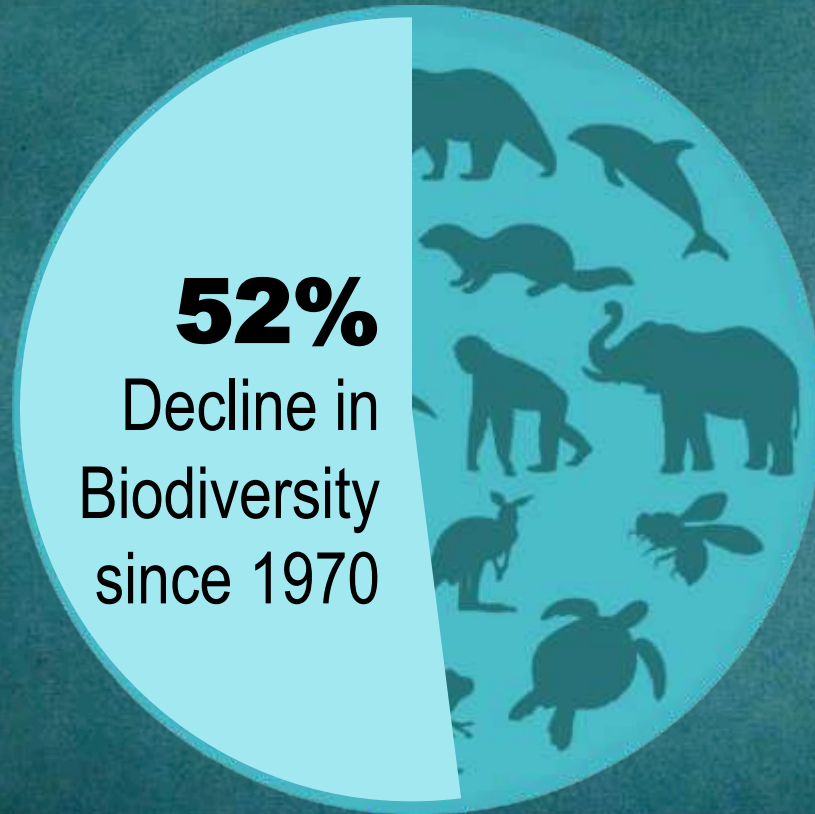




[ENOUGH]

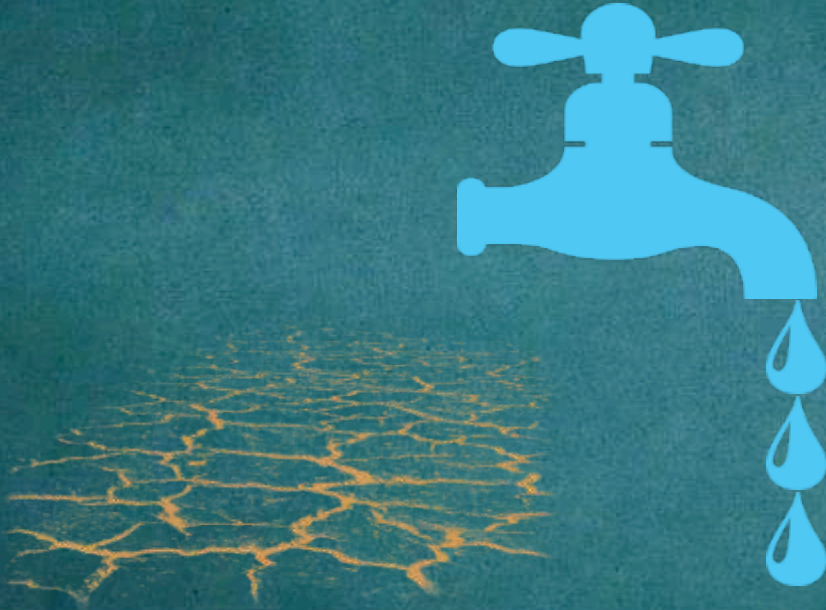
?

A planet under pressure



A planet under pressure: water

By 2025, at least 3.5 billion people will live in water-stressed river basins.



A planet under pressure: food

Over the next 40 years, we'll need to produce as much food as we have in the last 8,000 years of agriculture.



Food Production



Each year **7.2 BILLION PEOPLE CONSUME**

Our quest to feed

1.6 TIMES

what the Earth's natural resources can continue to provide.

a growing global

population is

living a

HUGE

impact.

In short, our planet simply can't replenish itself fast enough to meet expanding human needs.



2050



We must **FREEZE** the footprint of **FOOD** now!

Source: Living Planet Report 2014. WWF in collaboration with Global Footprint Network, Water Footprint Network and ZSL Living Conservation

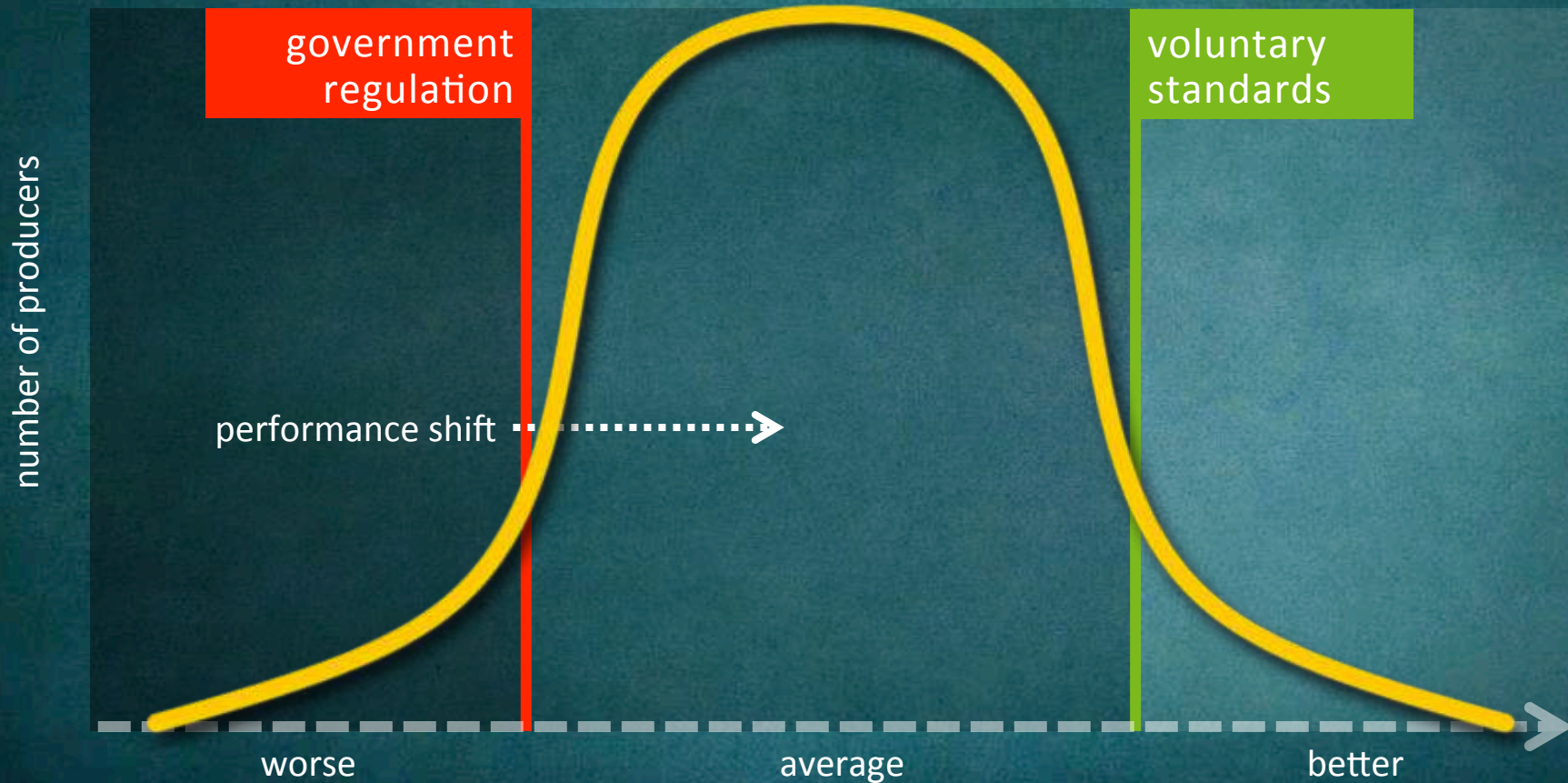


Sustainable Intensification



Food Sustainability: 2 focuses

Sustainable Intensification: Reward the best or move the rest?



waste

1 out of 3 calories





40% in US

Photo: NatGeo



POOR
NUTRITION
CAUSES
NEARLY HALF
(45%) OF
DEATHS IN
CHILDREN
UNDER FIVE –
3.1 MILLION
CHILDREN
EACH YEAR.



Threats to the Environment are Threats to Business

Today, nature provides \$72 trillion of “free” goods and services.



cutting through complexity

Expect the Unexpected:

Building business value
in a changing world

The highest
environmental
cost is generated
by the food
sector:
224% of Earnings

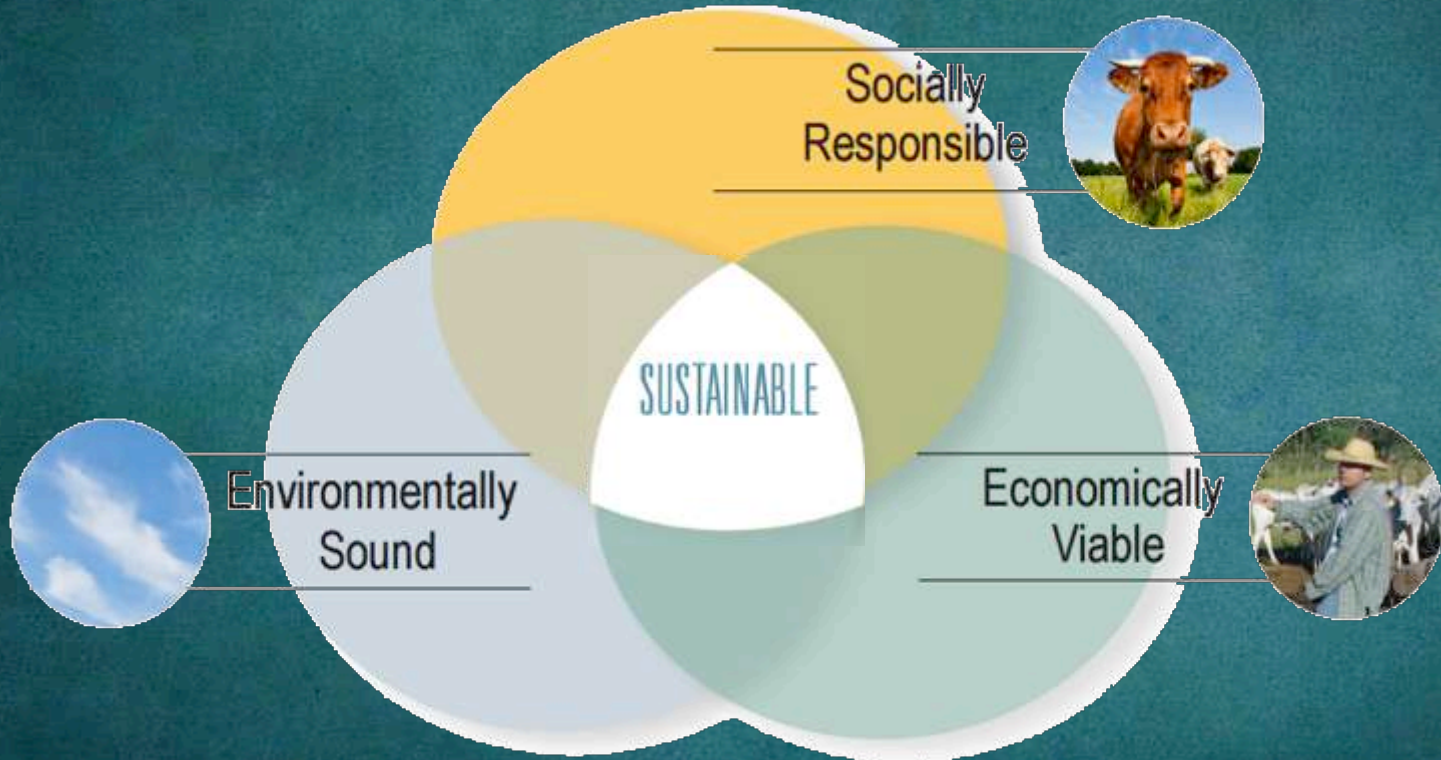
It's not Sustainable!!!



What's Sustainability?



What's Sustainability?





International Egg Commission

IEC Warsaw 2016

Global Round Table for Sustainable Eggs (GRSE)

Idea & Goals

Vision

To enhance and create an egg value chain that believes in and displays socially responsibility, whilst being environmentally sound and economically viable.

Mission

The Global Roundtable for Sustainable Eggs will champion continuous development and improvement in sustainability across the global egg value chain through multi-sector stakeholder engagement, collaboration, knowledge sharing, sound science and leadership.



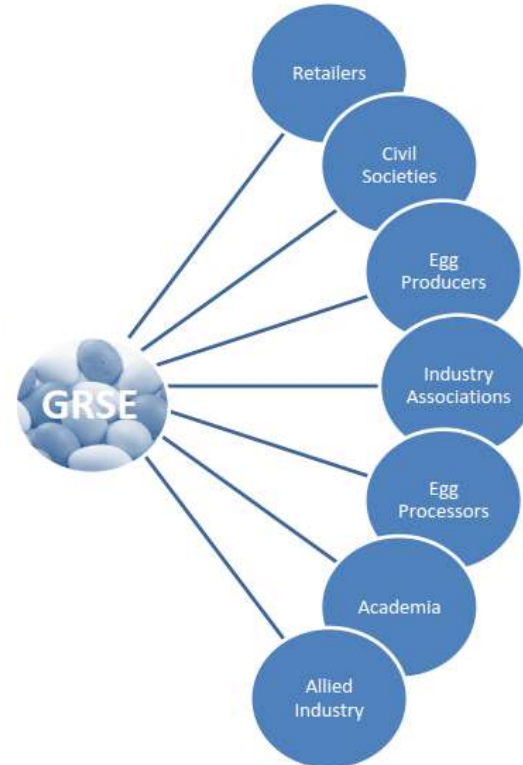


Global Round Table for Sustainable Eggs (GRSE)

Idea & Goals

Who should be members

GRSE will look to incorporate sector diversity with stakeholder membership from the following groups





Global Round Table for Sustainable Eggs (GRSE)

Idea & Goals

Foundations of the GRSE

1. Environment and Natural Resources
2. Safe Affordable High Quality Protein
3. People and the Community
4. Animal Health & Welfare
5. Efficiency and Innovation





Global Round Table for Sustainable Eggs (GRSE)

Idea & Goals

Approach

Provides a common set of Foundations for sustainable eggs that national roundtables and other initiatives can use to meet the overall Vision and Mission.

Will not provide certification for sustainable eggs but will encourage the development of more regional specific indicators.

Recognises the diversity of conditions at local, national and regional levels and a diversity of egg production systems, but expects the fundamental Foundations to be respected across all GRSE initiatives.



A photograph of a farmer walking away from the camera on a dirt path through a lush green field. The farmer is wearing a light blue short-sleeved shirt and dark green trousers. He is carrying a long wooden handle with a pitchfork on his right shoulder. The field is filled with rows of young green plants. In the background, there are rolling hills and a line of trees under a bright, hazy sky, suggesting a sunrise or sunset. The overall scene is peaceful and rural.

WWF Vision

To build a future in
which people live in
harmony with nature.



YOU can make
a difference!

carlos.saviani@wwfus.org



wwf.org



facebook.com/wwf



[@wwf](https://twitter.com/wwf)